

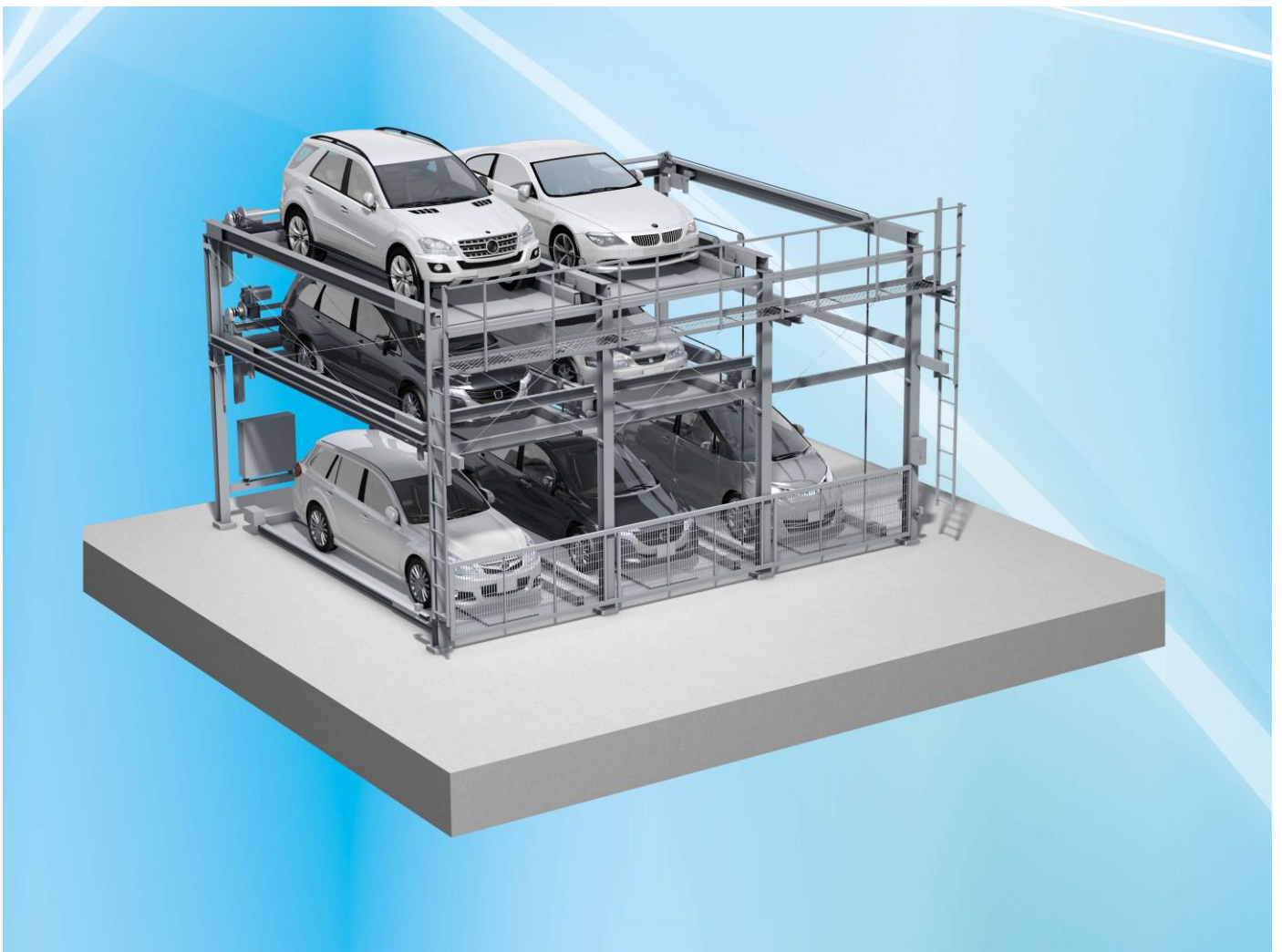


Mechanical Multistory Parking Equipment

Ground 3-stage type(Lifting/Lowering and transverse type)
parking Equipment

Puzzle HS30

- A compact 3-stage type (ground 3-stage type) parking equipment with excellent parking efficiency.
- Equipped with various safety devices to ensure safety.
- Built with hot-dip galvanized materials, structures and pallets are having advantages of anti-rusting and weatherability .
- Inverter controls and low noise motors made the noise reduction possible.



Kyokuto Kaihatsu Parking Co., Ltd.

6-1-45, Koshienguchi, Nishinomiya-shi, Hyogo,
663-8545, Japan

TEL: +81-(0)798-66-1567

FAX: +81-(0)798-65-7410

The parking equipment in this photo is equipped with optional specifications.

CONTACT US:

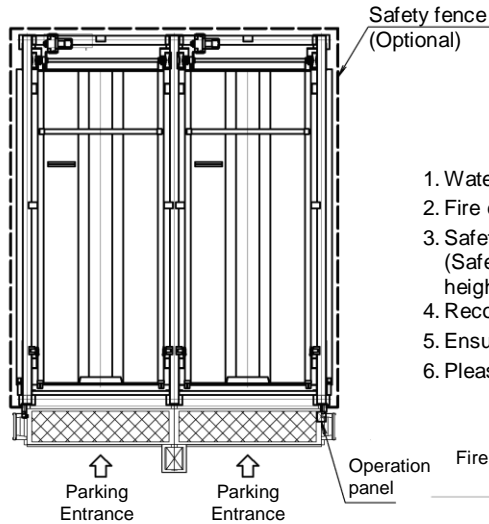
PT. KYOKUTO INDOMOBIL DISTRIBUTOR INDONESIA

INDOMOBIL TOWER 6th FLOOR,
JL. MT HARYONO, JAKARTA 13330

TELP. +62-(0)21-8591-8441

EMAIL sales.admin@kyokuto.indomobil.co.id

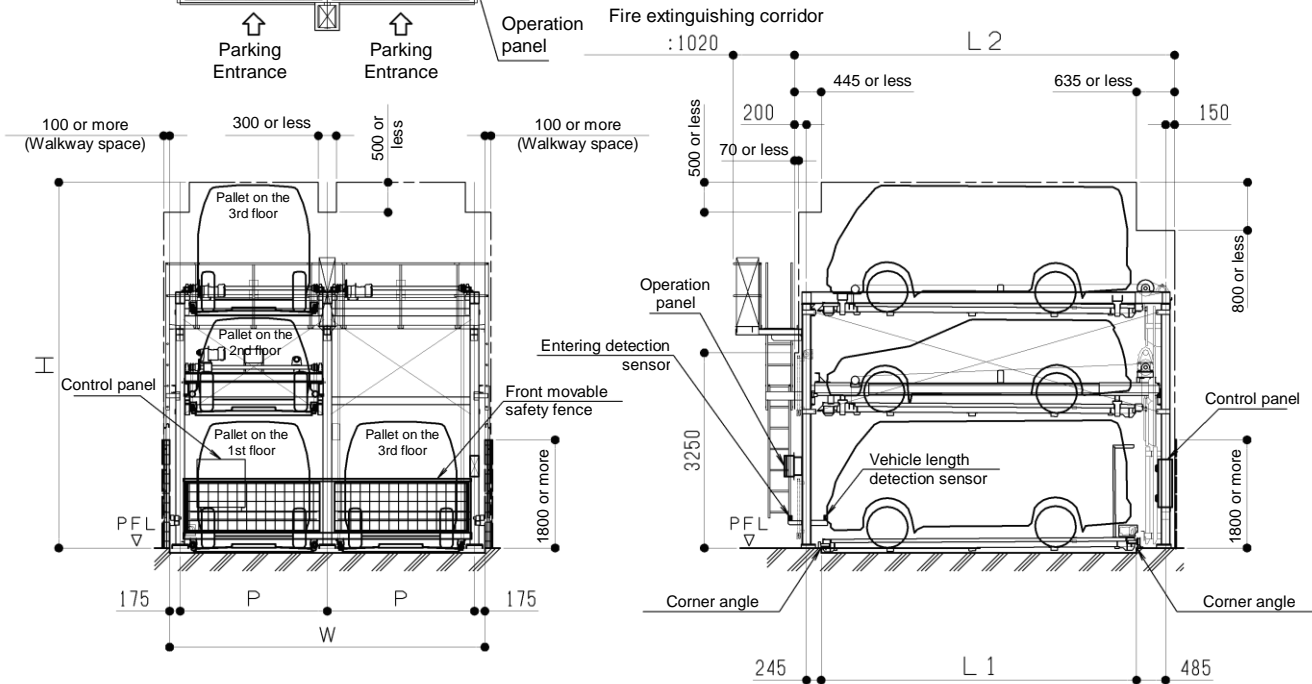




Ground 3-stage type(Lifting/Lowering and transverse type) parking equipment

Puzzle HS30

1. Water drainage equipment is required in the pit.
2. Fire extinguishing equipment may be required by the Fire Service Act.
3. Safety fences are required on both sides and back side of the equipment. (Safety fences are not required when there is a wall or a fence with the height of over 1,800mm)
4. Recommended drive way width in front of the equipment is 6 m or more.
5. Ensure the ground walkway space.
6. Please note that these specifications are subject to change without notice.



Specifications

Equipment type		3-stage (Ground 3-stage type) lifting/lowering & transverse type									
Specifications		For standard roof vehicles			For high roof vehicles only 1 and 3 stages			For high roof vehicles all stages			
Classification codes		P490	M525	W550	PH490	MH525	WH550	PA490	MA525	WA550	
Specification of storable vehicle	Total length (mm)	4700	5050	5300	4700	5050	5300	4700	5050	5300	
	Total width (mm)	1750		1850	1950	1750		1850	1950	1750	
		3rd floor	1550			2100			2100		
	Total height (mm)	2nd floor	1550			1550			2100		
		1st floor	1900			2100			2100		
Weight (kg)	2000		2300	2000		2300	2000		2300		
Lowest ground height (mm)	120										
Pit depth (mm)	L1	4900	5250	5500	4900	5250	5500	4900	5250	5500	
Required depth (mm)	L2	5980	6330	6580	5980	6330	6580	5980	6330	6580	
Pallet pitch (mm)	P	2350	2450	2550	2350	2450	2550	2350	2450	2550	
Pit width (mm)	W	P x [N] + 350									
Pit height (mm)	80 or more (above the surface of water)										
Effective height of equipment (mm)	H	5340			6090			6640			
Required operating Time (50/60Hz) (Second)	Transverse	Approx. 17									
	Lifting at 3rd floor	Approx. 52			Approx. 54			Approx. 61			
	Lifting at 2nd floor	Approx. 30			Approx. 33			Approx. 33			
	Gate opening/closing	Approx. 17									
Motor	Loading · Lowering	2.2 kw with brake (inverter control)									
	Transverse	0.2 kw with brake (inverter control)									
Power supply	Three phase AC 200/200 V (50/60 Hz), 5 to 6 kVA + Type D grounding										
Parking method	Park backward only										
Rust prevention specification	Galvanized										
Number of storable vehicles	([N] x 3) - 2 (vehicles)										

Safety devices :

- Pallet fall prevention device
- Emergency stop switch
- Electric power failure stop device
- Front movable safety fence
- Front Entering detection sensor
- Vehicle length detection sensor
- Overrun prevention device
- Solenoid lock key

Optionals :

- Fire extinction corridor
- Rotary lamp
- Contact for failure indication
- Safety fence

* Contact us for installation in cold climates.

* Periodic maintenance is required to use for many years. Maintenance and service agreement is required after installing the equipment.

[N] indicates the number of lines at a level. (Up to 8 lines)



Mechanical Multistory Parking Equipment

Ground 4-stage type(Lifting/Lowering and transverse type)
parking Equipment

Puzzle HS40

- A compact 4-stage type (ground 4-stage type) parking equipment with excellent parking efficiency.
- Equipped with various safety devices to ensure safety.
- Built with hot-dip galvanized materials, structures and pallets are having advantages of anti-rusting and weatherability .
- Inverter controls and low noise motors made the noise reduction possible.



The parking equipment in this photo is equipped with optional specifications.

Kyokuto Kaihatsu Parking Co., Ltd.

6-1-45, Koshienguchi, Nishinomiya-shi, Hyogo,
663-8545, Japan

TEL: +81-(0)798-66-1567

FAX: +81-(0)798-65-7410

CONTACT US:

PT. KYOKUTO INDOMOBIL DISTRIBUTOR INDONESIA

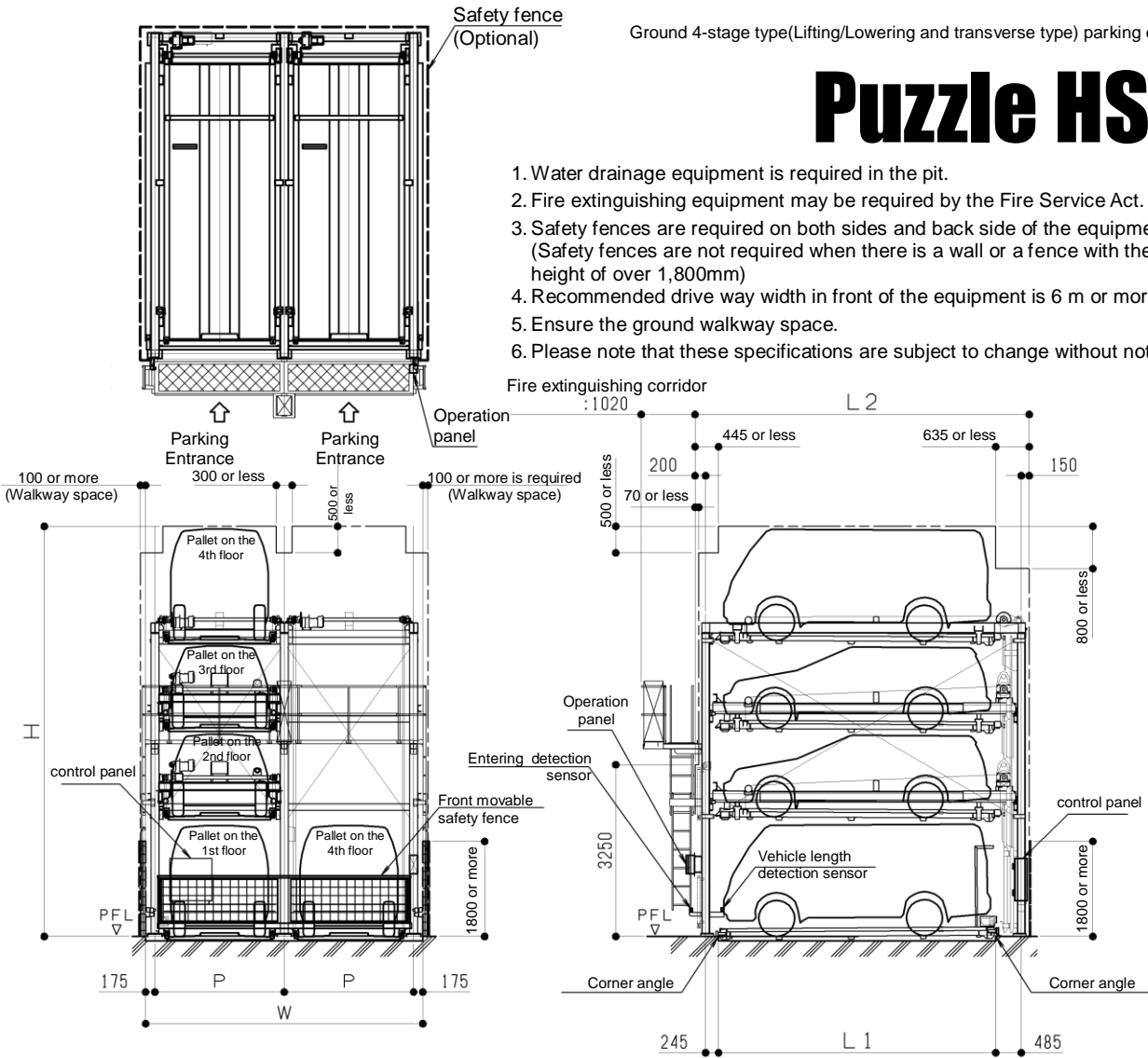
INDOMOBIL TOWER 6th FLOOR,
JL. MT HARYONO, JAKARTA 13330

TELP. +62-(0)21-8591-8441

EMAIL sales.admin@kyokuto.indomobil.co.id



Puzzle HS40



1. Water drainage equipment is required in the pit.
2. Fire extinguishing equipment may be required by the Fire Service Act.
3. Safety fences are required on both sides and back side of the equipment. (Safety fences are not required when there is a wall or a fence with the height of over 1,800mm)
4. Recommended drive way width in front of the equipment is 6 m or more.
5. Ensure the ground walkway space.
6. Please note that these specifications are subject to change without notice.

Specifications

Equipment type		4-stage (Ground 4-stage type) lifting/lowering & transverse type									
Specifications		For standard roof vehicles			For high roof vehicles only 1 and 4 stages			For high roof vehicles all stages			
Classification codes		P490	M525	W550	PH490	MH525	WH550	PA490	MA525	WA550	
Specification of storable vehicle	Total length (mm)	4700	5050	5300	4700	5050	5300	4700	5050	5300	
	Total height (mm)	4th floor	1550			2100			2100		
		3rd floor	1550			1550			2100		
		2nd floor	1550			1550			2100		
		1st floor	1900			2100			2100		
Weight (kg)	2000		2300	2000		2300	2000		2300		
Lowest ground height (mm)	120										
Pit depth (mm)	L1	4900	5250	5500	4900	5250	5500	4900	5250	5500	
Required depth (mm)	L2	5980	6330	6580	5980	6330	6580	5980	6330	6580	
Pallet pitch (mm)	P	2350	2450	2550	2350	2450	2550	2350	2450	2550	
Pit width (mm)	W	P x [N] + 350									
Pit height (mm)		80 or more (above the surface of water)									
Effective height of equipment (mm)	H	7010			7760			8860			
Required operating Time (50/60Hz) (Second)	Traverse	Approx. 17									
	Lifting at 4th floor	Approx. 73			Approx. 76			Approx. 90			
	Lifting at 3rd floor	Approx. 52			Approx. 54			Approx. 62			
	Lifting at 2nd floor	Approx. 30			Approx. 33			Approx. 33			
Gate opening/closing		Approx. 17									
Motor	Loading · Lowering	2.2 kw with brake (inverter control)									
	Traverse	0.2 kw with brake (inverter control)									
Power supply		Three phase AC 200/200 V (50/60 Hz), 5 to 6 kVA + Type D grounding									
Parking method		Park backward only									
Rust prevention specification		Galvanized									
Number of storable vehicles		([N] x 4) - 3 (vehicles)									

[N] indicates the number of pallets at a level. (Up to 8 pallets)

Safety devices :

- Pallet fall prevention device
- Emergency stop switch
- Electric power failure stop device
- Front movable safety fence
- Front Entering detection sensor
- Vehicle length detection sensor
- Overrun prevention device
- Solenoid lock key

Optionals :

- Fire extinction corridor
- Rotary lamp
- Contact for failure indication
- Safety fence

* Contact us for installation in cold climates.

* Periodic maintenance is required to use for many years. Maintenance and service agreement is required after installing the equipment.